

PRODUCT OVERVIEW

# HYDRAULIC CONTROL VALVES AND TEST EQUIPMENT





HYDRAULIC MEASUREMENT AND CONTROL

# INDUSTRIAL CONDITION MONITORING

## FLOW AND TEMPERATURE

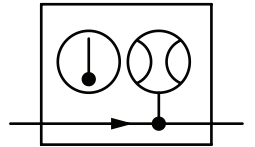
### FI750 SERIES

AT A GLANCE



#### In-Line Flow Indicator

- Maximum Rated Pressure: Up to 420 bar, 6,000 psi
- Maximum Rated Flow: Up to 180 L/min, 48 US gpm
- Ambient Temperature: -10 to 50°C, 14 to 122°F
- Porting: BSPP, NPSF, SAE
- Material: Body Material: Aluminium 2011T6  
Internal Material: Mainly Brass  
Seal: FKM
- Weight: 1.4 kg, 3.1 lbs



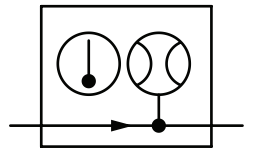
### FI1500 SERIES

AT A GLANCE



#### In-Line Flow Indicator

- Maximum Rated Pressure: Up to 350 bar, 5000 psi
- Maximum Rated Flow: Up to 400 L/min, 100 US gpm
- Ambient Temperature: -10 to 50°C, 14 to 122°F
- Porting: BSPP, SAE
- Material: Body Materials: Aluminium 2011T6  
Internal Materials: Mainly Brass  
Seals: FKM
- Weight: 3.2 kg, 7 lb



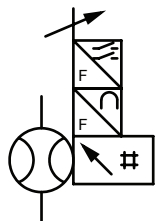
### FLOWHUB SERIES

AT A GLANCE



#### Flow, Temperature, Measure, Display, Switch, Transmit

- Maximum Rated Pressure: 420 bar, 6000 psi
- Maximum Rated Flow: 360 L/min, 95 US gpm
- Ambient Temperature Range: 0 to 50°C, 32 to 122°F
- Fluid Temperature Range: 5 to 90°C, 41 to 194°F
- Porting: Male BSPP, Male SAE JIC
- Material: Body Materials: Aluminium  
Internal Materials: Brass, Stainless Steel, Carbon Steel



FLOW AND TEMPERATURE

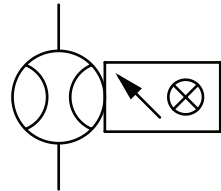
WP SERIES

AT A GLANCE



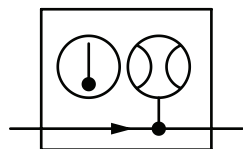
Hydraulic Flow Monitor

- Maximum Rated Pressure: Up to 420 bar, 6000 psi
- Maximum Rated Flow: Up to 550 L/min, 150 US gpm
- Maximum Rated Temperature: 116°C, 240°F
- Accuracy: ± 2.0% of full scale (-BI code ±0.4% of full scale)
- Porting: BSPP, NPTF, SAE
- Material: Body Materials: Aluminium, Brass or Stainless Steel  
Internal Materials: Stainless Steel



Reversible Flow Indicator

- Maximum Rated Pressure: Up to 420 bar, 6000 psi
- Maximum Rated Flow: Up to 200 L/min, 54 US gpm
- Ambient Temperature: -10 to 50°C, 14 to 122°F
- Porting: BSPP, SAE
- Material: Body Materials: Aluminium 2011T6  
Internal Materials: Stainless Steel, Brass  
Seals: NBR, FKM
- Weight: 2.0 kg, 4.4 lb



PRESSURE

J1939 SERIES

AT A GLANCE



SAE J1939 CAN compatible sensors for hydraulic system monitoring

- Maximum Rated Pressure: 480 bar, 7000 psi
- Maximum Flow: 1500 L/min, 400 US gpm
- Ambient Temperature Range: 5 to 40°C, 41 to 104°F
- Fluid Temperature Range: 5 to 90°C, 41 to 194°F continuous use
- Compatible Fluid: Mineral oils to ISO 11158.  
Other fluids consult sales office.
- Accuracy/Tolerances: Reading 15% to 100% of flow range - 1% of indicated reading. Readings below 15% of full scale flow - fixed accuracy of 0.15% of full scale (CT15 is 1% of full scale).



HYDRAULIC USAGE

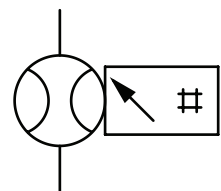
RFS200

AT A GLANCE



Flow Hours Counter

- Maximum Rated Pressure: Up to 420 bar, 6,000 psi
- Maximum Rated Flow: Up to 200 L/min, 52 US gpm
- Ambient Temperature Range: -20 to 50°C, -4 to 122°F
- Fluid Temperature Range: -20 to 100°C, -4 to 212°F
- Compatible fluid: Mineral oils to ISO 11158. Other fluids consult sales office.
- Porting: BSPP, SAE





HYDRAULIC MEASUREMENT AND CONTROL

# PORTABLE HYDRAULIC TESTERS

## MECHANICAL HYDRAULIC TESTERS

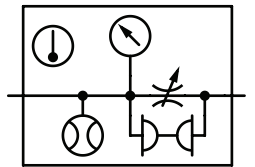
### RFIK SERIES

AT A GLANCE



### Mechanical Hydraulic Tester

- Maximum Rated Pressure: Up to 420 bar, 6090 psi
- Maximum Flow: Up to 270 L/min, 70 US gpm
- Ambient Temperature Range: -10 to 50°C, 14 to 122°F
- Fluid Temperature Range: 20 to 80°C, 68 to 176°F
- Compatible Fluids: Mineral oils, Other fluids consult sales office
- Accuracy: Flow:  $\pm 4\%$  FS  
Pressure:  $\pm 1.6\%$  FS  
Temperature:  $\pm 2.5\text{ }^\circ\text{C}$ ,  $\pm 5\text{ }^\circ\text{F}$



## DIGITAL HYDRAULIC TESTERS

### DHT 1 SERIES

AT A GLANCE



### Digital Hydraulic Tester

- Maximum Rated Pressure: Up to 480 bar, 7000 psi
- Maximum Rated Flow: Up to 800 L/min, 210 US gpm
- Ambient Temperature: 5 to 40°C, 41 to 104°F
- Compatible Fluid: Mineral oils to ISO 11158. Other fluids consult sales office.
- Accuracy: Flow:  $\pm 1\%$  full scale  
Pressure:  $\pm 1.6\%$  full scale  
Temperature:  $\pm 1\text{ }^\circ\text{C}$ ,  $\pm 2\text{ }^\circ\text{F}$
- Porting: BSPP, SAE



## DIGITAL HYDRAULIC MULTIMETERS

### DHM 4 SERIES

AT A GLANCE



### Digital Hydraulic Multimeter

- Maximum Rated Pressure: Up to 480 bar, 7000 psi
- Maximum Rated Flow: Up to 800 L/min, 210 US gpm
- Ambient Temperature: 5 to 40°C, 41 to 104°F
- Compatible Fluid: Mineral oils to ISO 11158. Other fluids consult sales office.
- Porting: BSPP, SAE
- Material: Case: Powder coat painted Mild Steel  
Flow Block: High tensile aluminium  
Seal: FKM





HYDRAULIC MEASUREMENT AND CONTROL

# HYDRAULIC DATALOGGERS

## DATALOGGERS

### HPM110 SERIES

AT A GLANCE



### Digital Pressure Gauge

- Maximum Rated Pressure: Up to 600 bar, 8700 psi
- Ambient Temperature Range: -10 to 50 °C, 14 to 144 °F
- Fluid Temperature Range: -20 to 80 °C, 4 to 176 °F
- Compatible Fluids: oil, water, other fluids consult sales office
- Accuracy/ Tolerances: ±0.5% Full Scale
- Porting: BSPP, SAE



### HPM4000 SERIES

AT A GLANCE



### Hydraulic Data Loggers SR & CAN

- Operating Temperature Range: 0 to 50°C, 32 to 122°F
- Power Supply: Input 100 - 240 VAC
- Connection Type: Micro-USB socket, Type B, +5 VDC max 1000mA
- Battery: Lithium Ion pack 3.7 VDC, 4500 mAh
- Battery life: With 2 sensors >8 hours
- Degree of Protection: IP67 (EN60529)



### HPM7000 SERIES

AT A GLANCE



### Hydraulic Data Logger

- Ambient Temperature: -10 to 50 °C, 14 to 122 °F
- Memory: 12GB
- Ports: USB device (data transmission between device and PC)  
USB host 1 (connection with external storage media)  
USB host 2 (connection with external storage media)  
LAN (connection with network cable)
- Material: Body materials: ABS/PC (thermoplastic)  
Body Protective Materials: TPE (thermoplastic elastomer)
- Weight: 1.88 kg, 4.1 lb (without input modules)
- Mounting: Carrying Strap, Folding Stand and VESA, standard 100 x 100 mm / M4 metric



## DATALOGGERS - KITS

## OEMS WORLDWIDE

## AT A GLANCE



### Custom Hydraulic Test Kits

- Customised kits and sizes for your needs
- Easy to transport
- Rugged, durable, waterproof and airline approved
- Renowned and internationally recognised PelicanTM case brand
- Wheels and carry handle on larger cases
- Custom and branded kits available



## SENSORS FOR DATALOGGERS

## PRESSURE / TEMPERATURE SENSORS

## AT A GLANCE



### SR & Intelligent Digital (CAN-open) sensors and accessories for use with HPM Series

- Maximum Rated Pressure: 1000 bar, 14,500 psi
- Ambient Temperature Range: -25 to 85°C, -13 to 185°F
- Accuracy/Tolerances: Pressure:  $\pm 0.5\%$  full scale, Temperature:  $\pm 3$  °C, 5.4 °F (SR-PTT-\* ONLY)
- IP Rating: IP54 (EN60529)
- Power Supply: 7-15 Vdc
- Response Time: 1 ms

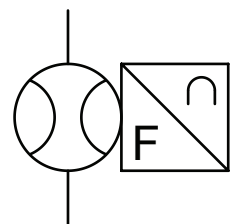


## CT FOR HPM SERIES

## AT A GLANCE

### Turbine Flow Meters

- Maximum Rated Pressure: 480 bar, 7000 psi
- Maximum Flow: 1500 L/min, 400 US gpm
- Ambient Temperature Range: -10 to 50°C, 14 to 122°F
- Fluid Temperature Range: -20 to 90°C, -4 to 194°F continuous use
- Compatible Fluid: Mineral oils to ISO 11158. Other fluids consult sales office.
- Porting: BSPP, SAE

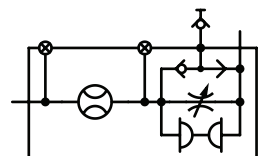


## CTR FOR HPM SERIES

## AT A GLANCE

### Turbine Flow Meters with Built-In Loading Valve

- Maximum Rated Pressure: 480 bar, 7000 psi
- Maximum Flow: 750 L/min, 200 US gpm
- Ambient Temperature Range: -10 to 50°C, 14 to 122°F
- Fluid Temperature Range: -20 to 90°C, -4 to 194°F continuous use
- Compatible Fluid: Mineral oils to ISO 11158. Other fluids consult sales office.
- Porting: BSPP, SAE





HYDRAULIC MEASUREMENT AND CONTROL

# TEST STAND INSTRUMENTATION

## HYDRAULIC DATA ACQUISITION

### C2000

AT A GLANCE



### Hydraulic Data-Acquisition System



- Modular 8-64 inputs
- Runs using Windows(TM) compatible software
- Hydraulic test solution
- Print test Certificates
- TCP/IP network ready
- Dedicated high-speed controller

## FLOW

### GF SERIES

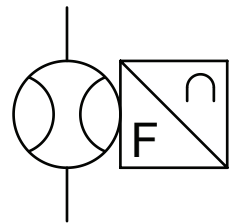
AT A GLANCE



### Positive Displacement Flow Meters with Conditioned Output



- Maximum Rated Pressure: 420 bar, 6,000 psi
- Maximum Rated Flow: 150 L/min, 40 US gpm
- Fluid Temperature Range: -40 to 120°C, -40 to 284°F
- Compatible Fluids: Mineral oils to ISO 11158. Other fluids consult sales office.
- Porting: BSPP, SAE
- Material: Body Materials: Stainless Steel  
Internal Materials: Stainless Steel  
Seals: NBR (Other seals consult sales office)



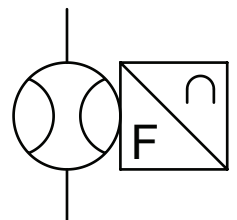
### CT SERIES

AT A GLANCE

### Turbine flow meters with conditioned output



- Maximum Rated Pressure: 480 bar, 6,960 psi
- Maximum Flow: 1,500 L/min, 396 US gpm
- Ambient Temperature Range: 5 to 40°C, 41 to 104°F
- Fluid Temperature Range: 5 to 90°C, 41 to 194°F
- Compatible Fluids: Mineral oils to ISO 11158. Other fluids consult sales office.
- Porting: BSPP, SAE



## FLOW

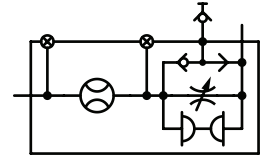
## CTR SERIES

## AT A GLANCE



### Turbine Flow Meters with Conditioned Output and Built-in Loading Valve

- Maximum Rated Pressure: 480 bar, 7,000 psi
- Maximum Rated Flow: 800 L/min, 210 US gpm
- Ambient Temperature Range: 5 to 40°C, 41 to 104°F
- Fluid Temperature Range: 5 to 90°C, 41 to 194°F
- Compatible Fluids: Mineral oils to ISO 11158. Other fluids consult sales office.
- Porting: BSPP, SAE



## PRESSURE, TEMPERATURE & SPEED

## APM ADVANCED PANEL METERS

## AT A GLANCE



### Digital process meters for analogue sensors

- Combined digital and bar graph display
- USB port for custom user settings
- Warning flash backlight
- Less than 53mm deep
- Display Range (Both Min & Max values)
- Two independent outputs or 4-20mA analogue monitor outputs



## WIKA-A-10 TYPE

## AT A GLANCE

### Pressure Transducers

- Maximum Rated Pressure: Up to 600 bar, 10,000 psi
- Operating Temperature Range: -40 to 100°C, -40 to 212°F
- Accuracy:  $\leq \pm 1\%$  Full Scale
- Material: Body Materials: Stainless Steel 316L, HNBR, PA  
Internal Materials: Stainless steel 316L and PH steel  
Materials: FKM
- Weight: 0.080 kg, 0.18 lbs
- Mounting: BSPP, SAE



## SP-TTL SERIES

## AT A GLANCE

### Magnetic Speed Pickup with Conditioned Output

- Ambient Temperature range: -5 to 40°C, 41 to 104°F
- Weight: 0.25kg, 0.55 lb
- Supply voltage (VS): 12 - 32 VDC
- Pulse output: 0 - 5 V square wave, minimum load 600 ohms
- Connection type: M12x1 5 pin
- Main Body: Steel 212A42 electroless nickel plated  
Lid: Aluminium 2011 T3 electroless nickel plated  
Treaded section: Steel 212A42 electroless nickel plate







## Temperature Sensors



- Maximum Rated Pressure: 480 bar, 7,000 psi
- Ambient Temperature: 5 to 40°C, 41 to 104°F
- Fluid Temperature Range: 0 to 125°C, 32 to 257°F
- Scaled Range: 0 to 150°C, 32 to 302°F
- Accuracy:  $\pm 1^\circ\text{C}$ ,  $\pm 2^\circ\text{F}$
- Compatible Fluids: Mineral oils to ISO 11158. Other fluids consult sales office

## HYDRAULIC ACCESSORIES



## Safety Burst Discs



- Guaranteed to rupture within the specified pressure range
- Protects the load valve from accidental over-pressurisation
- Fast and easy to replace



HYDRAULIC MEASUREMENT AND CONTROL

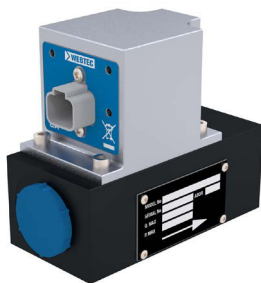
# MOBILE CONDITION MONITORING

FLOW AND TEMPERATURE

CTA SERIES

NEW

AT A GLANCE

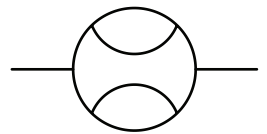


## Automotive Ready Hydraulic System Flow Monitor with J1939 Interface



Rugged, resilient hydraulic oil flow and temperature monitors designed for permanent installation in mobile machinery.

Ideal for on and off-highway machinery to monitor hydraulic system performance. Suitable for closed loop control, real-time diagnostics, safety interlocks and inclusion in predictive maintenance / IoT systems to reduce downtime or enable autonomous vehicle operation.



Designed to meet the standards for components fitted to heavy duty vehicle applications, the meters have a J1939 CAN-bus interface for easy integration

- Flows from 8 - 300 L/min, 2 - 80 USgpm
- Pressure: up to 420 bar, 6000 psi
- Output: J1939 reporting flow and temperature
- Calibration: 21cSt as standard, other viscosities possible
- Deutsch automotive connector
- Ingress protection: IP69K
- Tested to SAE J1455, ISO 11451, CISPR 25 and SAE J1113-13

PRESSURE

J1939 SERIES

AT A GLANCE



## SAE J1939 CAN compatible sensors for hydraulic system monitoring



- Maximum Rated Pressure: 480 bar, 7000 psi
- Maximum Flow: 1500 L/min, 400 US gpm
- Ambient Temperature Range: 5 to 40°C, 41 to 104°F
- Fluid Temperature Range: 5 to 90°C, 41 to 194°F continuous use
- Compatible Fluid: Mineral oils to ISO 11158. Other fluids consult sales office.
- Accuracy/Tolerances: Reading 15% to 100% of flow range - 1% of indicated reading. Readings below 15% of full scale flow - fixed accuracy of 0.15% of full scale (CT15 is 1% of full scale).



HYDRAULIC MEASUREMENT AND CONTROL

# HYDRAULIC ACCESSORIES

## ACCESSORIES

## PT100 SERIES

AT A GLANCE



### Custom pressure test kits

- Custom built to your specification - pick and mix from huge range
- The kit includes gauges, hoses, test points and adaptors
- Provides a complete test system for rapid pressure testing
- Pressure test points can be fitted anywhere in the circuit for instant pressure checks saving installation costs of piping and gauges
- Test hoses can be connected by hand under full system pressure without loss of oil or ingress of dirt. Ideal for taking oil samples and bleeding air
- The case provides ample storage. The gauge panel can be removed for convenient use while testing.



## 63 MM DIAMETER

AT A GLANCE



### Pressure Gauges

- Bottom or centre back connection
- Glycerine filled
- 1/4" BSPP connection



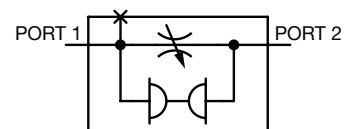
## HV SERIES

AT A GLANCE



### Loading Valve

- Maximum Rated Pressure: 420 bar, 6,000 psi)
- Maximum Rated Flow: Up to 800 L/min, 210 US gpm
- Ambient Temperature: 5 to 40°C, 59 to 104°F
- Fluid Temperature Range: 0 to 120°C, 32 to 248°F
- Compatible Fluids: Mineral oils to ISO 11158. Other fluids consult sales office
- Porting: BSPP, SAE



Webtec reserve the right to make improvements and changes to the specification without notice

Your local distributor

# AROFLEX

Hydraulik  Maschinenbau

Aroflex AG | CH-8560 Märstetten  
[www.aroflex.ch](http://www.aroflex.ch) | [info@aroflex.ch](mailto:info@aroflex.ch)



#### Webtec Products Limited

St. Ives, Cambridgeshire, PE27 3LZ, UK  
Tel: +44 (0) 1480 397 400  
[sales-uk@webtec.com](mailto:sales-uk@webtec.com)

#### Webtec LLC

1290 E. Waterford Ave, St. Francis, WI 53235 U.S.A.  
Tel: +1-414-769-6400  
[sales-us@webtec.com](mailto:sales-us@webtec.com)

#### Webtec (Europe) GmbH

Bonner Strasse 2m, 51379 Leverkusen, Germany  
Tel: +49 (0) 2171 - 79 14 910  
[sales-eu@webtec.com](mailto:sales-eu@webtec.com)

#### Webtec (Hong Kong) Ltd.

Room1109, CRE Centre, 889 Cheung Sha Wan Road, Cheung Sha Wan, Kowloon, Hong Kong  
Tel: +85230183090  
[sales-hk@webtec.com](mailto:sales-hk@webtec.com)

[www.webtec.com](http://www.webtec.com)